



Sound Insulation Prediction Software

Instructions for installing a Trial version

Trial Mode: A software license file can be obtained from your INSUL distributor to allow a temporary Trial of INSUL. This licence file will have the extension ldf (e.g. Insulv7-15Dec2012.ldf). **Obtain this trial license file before running INSUL for the first time.**

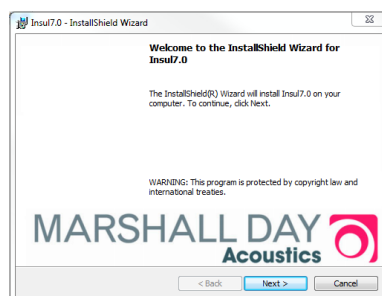
Go to the Insul website (www.insul.co.nz) and download the file from the link <http://www.insul.co.nz/download/setup.exe>

Before installing INSUL, you should close any open applications and log on as a user with sufficient access rights to install programs. This normally means having Administrator rights.

Note: For full operation the software requires a hardware key plugged into a USB port on the computer, however with the temporary software license (provided by your distributor) it will run in "Trial mode".

Install INSUL

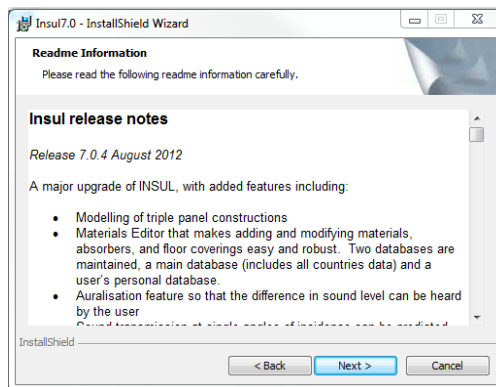
1. Unzip the files from the zip file you have downloaded and copy the files to a temporary folder.
2. Install INSUL by double clicking on the file "Setup.exe".
3. Read the instructions on the Welcome page and click the next button.



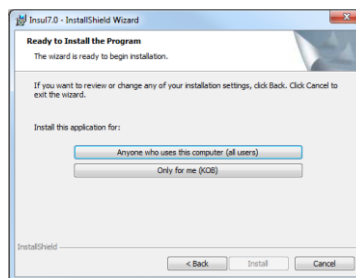
4. Read the Software license Agreement and if you accept the terms of the licence, click "I accept the terms in the licence agreement", then the next button.



5. If you wish to read the INSUL release notes you may scroll down the Readme Information then click the Next button.

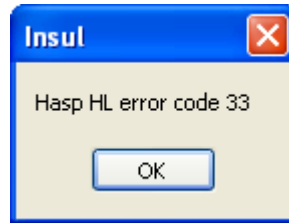


6. To choose a particular destination directory for INSUL's files click the Browse button. To accept the default destination directory click the Next button.
7. You will be asked if you want to install INSUL for anyone who uses the computer or for the user only. It is normal to choose the default which is for anyone who uses the computer.

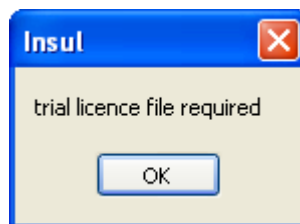


8. The program will now be installed and you can click Finish to exit the installation Wizard. You can now run the program from the normal Windows "Start " menu.

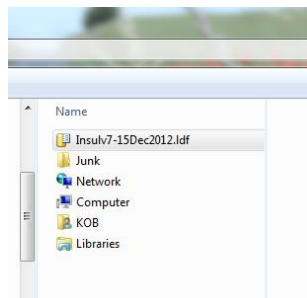
9. When you run INSUL in the Trial mode for the first time you will get the following error message (which you can ignore), click "OK"



Then you will be asked to read in a trial licence file



Click "OK" and browse to where you have stored the trial licence you received from your distributor.

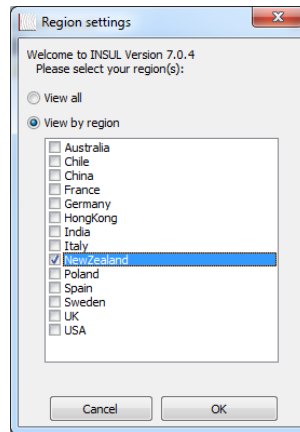


Open this file. This will store a licence in your computer and will allow temporary operation of INSUL. Note that all functions are available in the Trial mode except for Save and Print.

10. The program will now be installed and you can click Finish to exit the installation Wizard. You can now run the program from the normal Windows "Start " menu. The About form should display. Click Ok.



11. INSUL will display a form allowing you to choose what materials databases you wish to display. It is recommended that you first choose to display just one region to avoid being overwhelmed by the number of materials. You can change this later from the settings menu.



12. Once the trial period has expired you will not be able to run INSUL unless you have purchased INSUL and have been sent a USB key.
13. The Trial license can be used on multiple machines simultaneously.